

Discover Numicon in Supporting Children with SEND

 Book your place: <https://numicon-send-manchester-mar20.eventbrite.co.uk>

Key Learning Outcomes

This one day practical workshop focuses on the Numicon Breaking Barriers and new Numicon Big Ideas publications; it is designed to give you the opportunity to:

- Develop an understanding of the Numicon manipulatives and how they make abstract mathematical ideas real and 'visible'
- Experience the Numicon approach in action and consider how it can successfully support the learning needs of children who have not yet met Key Stage 1 or 2 objectives
- Understand more about the barriers to mathematics some children may face
- Discover how Numicon Breaking Barriers and Big Ideas support assessment and re-teaching of key mathematical ideas from Key Stages 1 and 2
- Discover useful ideas and strategies which can be applied back in your classroom

Agenda

- Introduction to Numicon manipulatives
- Prerequisite skills for success in early mathematics
- Barriers to success in mathematics
- Key mathematical ideas with Numicon
- Increase teacher confidence in how to support the learning of children working below age related expectation and those with SEND

Venue

Bridgelea Primary School,
Plymouth Grove West,
Manchester,
M13 0AQ

Date & time

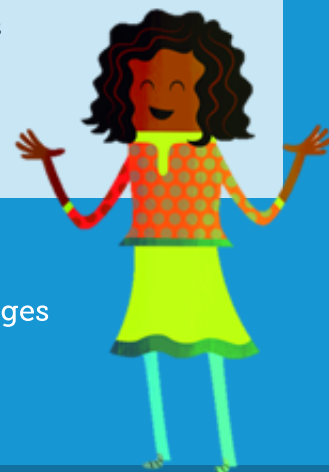
March 12th 2020
9.30-16.00

Course cost

£99pp +VAT

Who is this for?

Head teachers,
Subject Leaders,
SENCOs, Teachers
and TAs



What is Numicon?

Based on the proven concrete-pictorial-abstract approach, Numicon encourages children to explore maths using structured imagery and apparatus in order to understand and explain mathematical concepts

 Book now: <https://numicon-send-manchester-mar20.eventbrite.co.uk>