



Bridgelea Primary School
 Bridgelea Road
 Withington
 Manchester
 M20 3FB

Bridgelea Primary School
 Plymouth Grove West
 Longsight
 Manchester
 M13 0AQ

Safeguarding and Child Protection Policy

Article 28

You have the right to a good quality education. You should be encouraged to go to school to the highest level you can.

Article 29

Your education should help you use and develop your talents and abilities. It should also help you learn to live peacefully, protect the environment and respect other people.

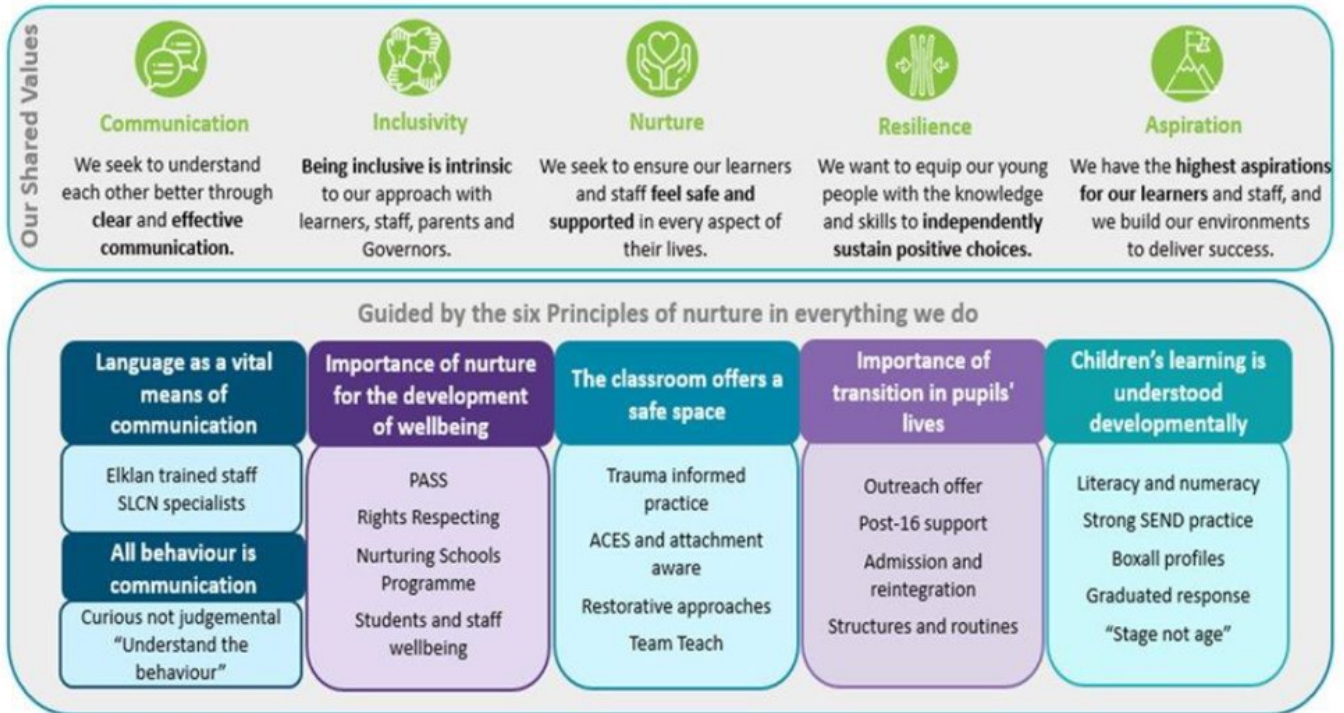
Article 31

You have the right to play and rest.

Implemented	SLT
Presented by	Lisa Shaw
Ratified by Governors	Autumn 2023
Review Date	Autumn 2024

Bridgelea Primary School Vision & Mission Statement

Our overall vision of '**Understanding People**' captures our core purpose perfectly. At Bridgelea we want to help our children, families, and communities to understand themselves and others more, whilst keeping their understanding of the statutory and wider curriculum.



Gold Rights Respecting School

Through the School Council the children decided they would like to focus on the following 10 Articles, whilst understanding no right is more important than another:

Article 12

You have the right to give your opinion, and for adults to listen and take it seriously.

Article 13

You have the right to find out things and share what you think with others, by talking, drawing, writing or in any other way unless it harms or offends other people.

Article 15

You have the right to choose your own friends and join or set up groups, as long as it isn't harmful to others.

Article 24

You have the right to the best health care possible, safe water to drink, nutritious food, a clean and safe environment, and information to help you stay well.

Article 27

You have the right to food, clothing, a safe place to live and to have your basic needs met. You should not be disadvantaged so that you can't do many of the things other kids can do.

Article 28

You have the right to a good quality education. You should be encouraged to go to school to the highest level you can.

Article 29

Your education should help you use and develop your talents and abilities. It should also help you learn to live peacefully, protect the environment and respect other people.

Article 30

You have the right to practice your own culture, language and religion - or any you choose. Minority and indigenous groups need special protection of this right.

Article 31

You have the right to play and rest.

Article 39

You have the right to help if you've been hurt, neglected or badly treated.

Equality and Accessibility

Our school aims to treat all pupils fairly and with respect. This involves providing access and opportunities for all pupils without discrimination of any kind. Our school is committed to ensuring staff are trained in equality issues with reference to the Equality Act 2010, including understanding disability issues.

At Bridgelea we ensure the accessibility of the curriculum, physical environment and information for pupils with special educational needs and disabilities.

Bridgelea Primary School will:

- recognize the potential for vulnerable pupils, reduce barriers to their achievement and inclusion and develop a strong culture for success
- focus on enhancing the life chances of their most vulnerable children
- plan for and teach children with learning needs through a range of proven interventions
- use a range of inclusive teaching strategies
- take an informed view of the possible literacy and mathematic interventions that will be utilized
- ensure effectively support transition of vulnerable children and young people
- evaluate a range of outcomes of their current additional provision and the value for money it provides; make informed decisions about how best to target available funding in the future
- provide professional development for staff and governors
- keep parents and carers informed in line with the school policies and the requirements of the 0 – 25 Code of Practice

The Equality Act defines an individual as disabled if he or she has a physical or mental impairment that has a 'substantial' and 'long term' adverse effect on his or her ability to undertake normal day to day activities.

Bridgelea Primary School will make reasonable adjustments for pupils with disabilities under the Equality Act 2010, to alleviate any substantial disadvantage that a disabled pupil faces in comparison with non-disabled pupils.

The Headteacher who has the ultimate responsibility for safeguarding is Kelly Eyre.

In their absence, the authorised member of staff is Lisa Shaw, Designated Safeguarding, Pastoral and Attendance Lead

KEY SCHOOL STAFF & ROLES

Name	Role	Contact Phone Number
Kelly Eyre	Headteacher	07739 868066
Lisa Shaw	Designated Safeguarding, Pastoral and Attendance Lead	07712 330424
Amy Robinson	Assistant Headteacher / DT-LAC	07704 338771
Caroline Gibson	Assistant Headteacher	07712 530464

Diane Hallworth	School Business Manager	07921 476440
Emma Mynes	Attendance HLTA	07704 338773
Emma Neary	HSB Intervention Practitioner	07715 905079
Chelsey Gledhill	HSB Intervention Practitioner	07510 385190

NAMED GOVERNORS for Safeguarding & Prevent	Contact Phone Number
Julie Heslop	0790 4656626

This policy will be reviewed annually unless an incident, or new legislation or guidance, suggests the need for an interim review.

The effectiveness of our safeguarding arrangements is monitored by SLT and the Governing Body. There are three main aims to our Safeguarding Policy:

Prevention: by creating a positive school atmosphere and providing high quality teaching and pastoral support to pupils;

Protection: by following agreed procedures and ensuring staff are appropriately recruited, trained and supported to respond appropriately and sensitively to Safeguarding concerns;

Support: by providing support for pupils and school staff and for children who may have been or are being abused.

All those working in education can contribute to the safeguarding and protection of the welfare of a child in need (KCSiE Part 2.78)

Review Date	Changes made	By whom
September 2023	Policy created	Lisa Shaw
	Policy reviewed	

Ratification by Governing Body

Academic year	Date of ratification	Chair of Governors
2023/2024	September 2023	Irene Kapetanaki

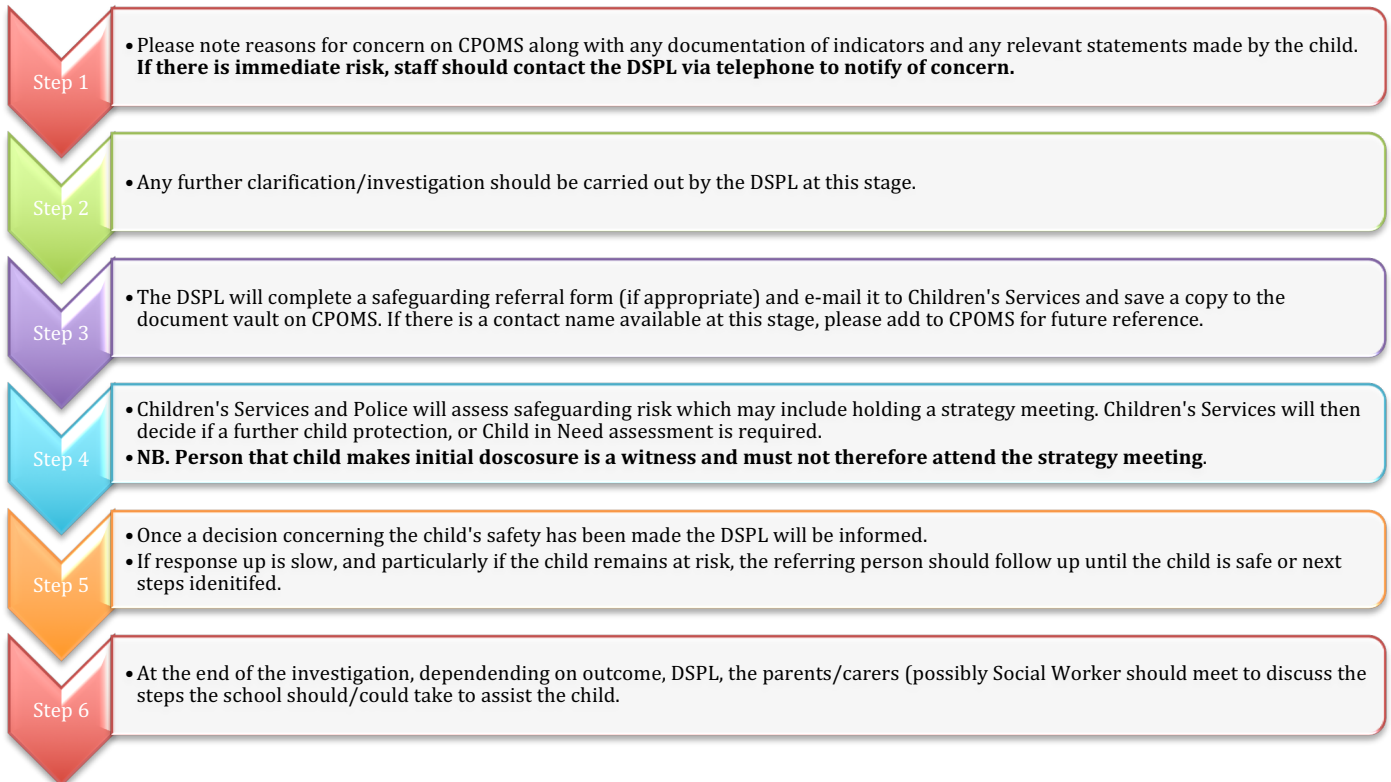
Quality Assurance

Bridgelea Primary School quality assures their safeguarding practice using a range of practices. Bridgelea Primary School uses Manchester City Council's S175 Safeguarding Evaluation form. Systems are also in place for all CPOM notifications to be alerted to the DSLs and Deputy DSLs so there is robust quality checking and monitoring of all logged incidents. At Bridgelea Primary School, systems are also in place for staff alerts to specific incidents including members of the SLT so that there is robust monitoring in place. The DSL reviews and updates the S175 action plan on a fortnightly basis and any areas of concern are discussed with the Headteacher. The DSL and Headteacher meet weekly to look at any emerging safeguarding issues or monitored children. also meets weekly with the DSL and Head of School.

Summary of Safeguarding Procedures

Our procedure if there is a concern about child welfare or safeguarding is: -

- Staff should log any concerns onto the schools Child Protection Online Management System (CPOMS) and telephone the DSL or Deputy DSL to report immediate concerns which require action.
- Staff working with children are advised to maintain an attitude of '**it could happen here**' where safeguarding is concerned. When concerned about the welfare of a child, staff should always act in the best interests of the child. (KCSIE, 1.51)
- If staff have any concerns about a child's welfare, they should act on them **immediately**



Staff should not assume a colleague, or another professional will take action and share information that might be critical in keeping children safe (KCSIE, 1.56). They should be mindful that early information sharing is vital for the effective identification, assessment, and allocation of appropriate service provision, whether this is when problems first emerge, or where a child is already known to local authority children's social care (such as a child in need or a child with a protection plan). Fears about sharing information **must not** be allowed to stand in the way of the need to safeguard and promote the welfare of children.

Useful Contact Telephone Numbers

Early Help Hubs: North 0161 234 1973, Central 0161 234 1975, South 0161 234 1977

Social Care Advice & Guidance Service: 0161 234 5001

Complex Safeguarding Hub Advice Line: 0161 226 4196

MCC Safeguarding in Education Team: 0161 245 7171

Our procedure if there is an allegation that an adult has harmed a child, or that a child is a risk from a named adult is;

All concerns of poor practice or possible child abuse by staff must be reported immediately to the Head of School. Complaints regarding the Head of School should be reported to the Chair of Governors. All allegations against staff should be investigation in line with the School Disciplinary and Dismissal Policy.

When a concern is reported the Head of School (or other relevant senior leadership team member) should immediately contact the Designated Officer (DO) formerly known as the Local Authority Designated Officer (DO) who has a statutory duty to ensure all allegations about safeguarding are handled properly and expeditiously. The Head of School will also seek advice from the school's HR provider.

All concerns including low-level should be reported to the Head of School unless concerning the head teacher in which case report to the chair of governors, chair of the management committee or proprietor of an independent school (KCSIE, 1.72)

Manchester LADO (sometimes known as DOLA or LA Designated Officer): 0161 234 1214

Our procedure for investigating and dealing with any complaints or concerns about our safeguarding practice that are brought to our attention is detailed in our Complaints Policy.

Additionally, we will co-operate with officers from the Education Department if they are aware of concerns which have been raised with Ofsted, the Regional Commissioner or the DfE.

Our procedure for whistleblowing if there is an urgent concern about child welfare or safeguarding that cannot be dealt with through our usual systems is: -

- . Staff will contact Manchester Children's Services: 0161 234 5001 or the NSPCC Whistleblowing Helpline: 0800 028 0285 or email help@nspcc.org.uk (KCSIE, 1.74-76)

CONTENTS: -

- 1. Introduction**
- 2. Roles & Responsibilities**
- 3. Training & Awareness Raising**
- 4. Safeguarding/Child Protection Policy & Procedures**
- 5. Case Management, Record Keeping & Multi-agency Working**
- 6. The Curriculum**
- 7. Online Safety**
- 8. Safer Recruitment**
- 9. Managing Allegations**
- 10. Safety On & Off-Site**
- 11. Complex Safeguarding**
- 12. Part 1 & Annex A and Annex B of 'Keeping Children Safe in Education (KCSIE), September 2023 - statutory guidance to be read by staff as determined by the headteacher/principal and Governing Body**

APPENDICES: -

- A.** Key Legislation, Statutory Guidance & Ofsted Framework
- B.** Other Government & National Guidance
- C.** Local Policies & Guidance (MCC, Greater Manchester & Manchester Safeguarding Partnership)
- D.** Other Relevant School Policies/Procedures
- E.** Other Relevant MCC Education Department Policies/Guidance
- F.** Abbreviations

1. INTRODUCTION

Through this policy we aim to create and maintain a safe learning environment where all children and adults feel safe, secure and valued and know they will be listened to and taken seriously.

This policy has been developed to ensure that all adults in our school, including regular staff, supply staff, volunteers, visitors and contractors are working together to safeguard and promote the welfare of children and young people and to identify and address any safeguarding concerns and to ensure consistent good practice.

Our approach is child-centered.

'Safeguarding and promoting the welfare of children is **everyone's** responsibility. **Everyone** who comes into contact with children and their families has a role to play. In order to fulfil this responsibility effectively, all practitioners should make sure their approach is child-centered. This means that they should consider, at all times, what is in the **best interests** of the child.'
(KCSiE, Part 1.2)

See KCSiE Part 1, Part 5 & Annexes A and B for definitions and further information about: -

- Abuse & Neglect - including physical, emotional & sexual abuse and neglect
- Channel
- Child Abduction and Community Safety Incidents
- Child on Child Abuse – including sexual harassment, upskirting & sharing of nude and semi-nude images
- Child Criminal Exploitation
- Child Sexual Exploitation
- Children and the Court System
- Children Missing from Education
- Children who are lesbian, gay, bi or trans (LGBT)
- Children with Family Members in Prison
- County Lines
- Cybercrime
- Domestic Abuse
- Early Help
- Elective Home Education
- Homelessness
- Human Rights Act, Equality Act 2010 & Public Sector Equality Duty
- Looked After Children and children open to or who have been open to a Social Worker
- Mental Health
- Modern Slavery & the National Referral Mechanism
- Online Safety, including Education at Home
- Prevent Duty
- Preventing Radicalisation
- Serious Violence
- Sexual Violence and Sexual Harassment between children in schools and colleges
- So-called 'Honour-Based Abuse' including Female Genital Mutilation & Forced Marriage & Breast Ironing

Safeguarding and promoting the welfare of children and young people goes beyond implementing basic child protection procedures. The aims of this policy are in accordance with both our Mission Statement and our Equal Opportunities Policy, and it is an integral part of all of our activities and functions.

'The Governing Body will ensure they facilitate a whole school approach to safeguarding. This means involving everyone in the school and ensuring that safeguarding, and child protection are at the forefront and underpin all relevant aspects of process and policy development. Ultimately, all systems, processes and policies should operate with the **best interests** of the child at heart.'

'Safeguarding and promoting the welfare of children is defined ... as:

- **protecting children from maltreatment;**
 - **preventing the impairment of children's mental health or physical health or development;**
 - **ensuring that children grow up in circumstances consistent with the provision of safe and effective care; and**
 - **taking action to enable all children to have the best outcomes.'**
- (KCSiE,1.4)**

- 1.1 Under the Education Act 2002, schools have a duty to safeguard and promote the welfare of their pupils and are committed to the guidance set out in 'Working Together to Safeguard Children 2018' (in process of review) and 'KCSiE 2023'. Our policy ensures that we comply with our Statutory Duties (Appendices A & B)
- 1.2 Our policy takes account of non-statutory guidance issued by the DfE and other relevant organisations in addition to guidance issued by the Greater Manchester Combined Authority), the Manchester Safeguarding Partnership (MSP) and Manchester Local Authority, especially Education, Children's Services and Community Safety (MCC)
- 1.3 Our policy ensures that we work in partnership with other organisations, where appropriate, to identify any concerns about child welfare and act to address them and that we comply with local policies, procedures and arrangements.
- 1.4 Our policy complements and supports other relevant school policies (Appendix A).
- 1.5 Our policy is regularly reviewed and we are responsive to new guidance and legislation and to promoting the safety of our staff and pupils in crisis situations.

2. ROLES & RESPONSIBILITIES

LEADERSHIP & MANAGEMENT

2.1 OUR GOVERNING BODY

Our Governing Body have a strategic leadership responsibility for our school's safeguarding arrangements and **will** ensure that they comply with their duties under legislation. They **will** have regard to KCSiE 2023, ensuring policies, procedures and training in their schools are effective and comply with the law at all times.

Our Governing Body are fully aware of our role in multi-agency safeguarding arrangements, of Manchester Safeguarding Partnership (MSP) arrangements and of the Child Death Review partnership arrangements and will ensure that we work together with appropriate relevant

agencies to safeguard and promote the welfare of local children, including identifying and responding to their needs.

The Governing Body will ensure that: -

- All members of the Governing Body have read the most recent publication of Keeping Children Safe in Education in its entirety
- All members of the Governing Body have received appropriate training to enable them to provide strategic challenge and assure themselves that there is a robust whole school approach to safeguarding (KCSiE Part 2.81, 2.95-97)
- A named member is identified as the designated governor for Safeguarding.
- Governors facilitate a whole school approach to safeguarding and that all systems, processes and policies operate with the best interests of the child at heart.
- Where there is a safeguarding concern, they and school leaders will ensure the child's wishes and feelings are taken into account when determining what action to take and what services to provide.
- The systems in place are well promoted, easily understood and easily accessible for children to confidently report abuse, knowing their concerns will be treated seriously, and knowing they can safely express their views and give feedback.
- Policies and procedures allow for appropriate action to be taken in a timely manner to safeguard and promote children's welfare.
- The school has an effective Child Protection Policy
- The school has a Behaviour Policy which includes measures to prevent bullying, cyberbullying, prejudice-based and discriminatory bullying.
- Child protection files are maintained as required
- More than one emergency number is held on file for each pupil
- The identified governor will provide the governing body with appropriate information about safeguarding and will liaise with the designated member of staff. The Safeguarding Governor will meet with the Headteacher and DSL termly, this meeting will look at the current safeguarding issues across the school and provide scrutiny and monitoring of the school's safeguarding practice.
- Our safeguarding policy and our staff Code of Conduct are reviewed at least annually, and staff are given opportunities to contribute to and shape our safeguarding arrangements and policies. Addenda or appendices may be added during periods of crisis to reflect changes of circumstance.
- We operate safer recruitment and selection practices in accordance with Part Three of KCSiE.
- We have procedures in place for dealing with allegations of abuse against members of staff, including supply teachers, volunteers and contractors and these are in line with KCSiE and Local Authority procedures. We will work with the LADO and other relevant agencies to support any investigations.
- All staff and volunteers who have regular contact with children and young people and contractors who are in contact with children and young people receive appropriate training and information about the safeguarding processes.
- There is appropriate challenge and quality assurance of the safeguarding policies and procedures.
- Our governors regularly review the effectiveness of online safety arrangements, including filters and monitoring, preparation for any online challenges or hoaxes and information shared with parents.

2.2 OUR HEADTEACHER

Our Headteacher will ensure that the policies and procedures, adopted by the governing body particularly those concerning referrals of cases of suspected abuse and neglect, are understood and followed by all staff.

Our headteacher is fully aware of our role in multi-agency safeguarding arrangements, of Manchester Safeguarding Partnership (MSP) arrangements and of the Child Death Review partnership arrangements. We will ensure that we work together with appropriate relevant agencies to safeguard and promote the welfare of local children, identifying and responding to their needs.

'Schools and colleges should work with local authority children's social care, the police, health services and other services to promote the welfare of children and protect them from harm. This includes providing a co-ordinated offer of early help when additional needs of children are identified and contributing to inter-agency plans to provide additional support to children subject to child protection plans'. (KCSiE 2.113)

'All schools and colleges should allow access for children's social care from the host local authority and, where appropriate, from a placing local authority, for that authority to conduct, or to consider whether to conduct, a section 17 or a section 47 assessment.' (KCSiE, 2.114)

Our Headteacher is fully aware of statutory guidance in KCSiE and will ensure that:-

- The policies and procedures adopted by the Governing Body to safeguard and promote the welfare of pupils are fully implemented and followed by all staff, including supply teachers and volunteers and that they are regularly updated in response to local practice or national changes in legislation.
- All staff including supply teachers, volunteers, visitors and contractors understand and comply with our Code of Conduct.
- We evaluate our safeguarding policies & procedures at least on an annual basis and return our completed Safeguarding Self Evaluation (SEF) using the S175 online tool to the LA as requested (bi-annually).
- We share the Safeguarding Self Evaluation and Action Plan with governors at least annually.
- We work with the LA to ensure that our policies and procedures are in line with DFE and LA guidance.
- A senior member of staff, known as the DSL, is appointed with a clear job description. They have lead responsibility for Child Protection and Safeguarding and receive appropriate on-going training, supervision and support as well as sufficient time and resources to enable them to discharge their responsibilities.
- Parents/carers are aware of and understand our responsibilities to promote the safety and welfare of our pupils by making our statutory obligations clear.
- The Safeguarding and Child Protection policy is available on our website and is included in the staff handbook and volunteers' handbook.
- Child friendly information of how to raise a concern/make a disclosure has been developed through our safeguarding practice and assemblies for all pupils. Information is also displayed throughout the school to support the children to understand how to feel

safe in school and who to speak to if they have any concerns and is accessible to all children.

- We co-operate fully with MCC and MSP multi-agency safeguarding procedures and arrangements are in place to monitor the quality of referrals and interventions and the processes for escalation of concerns. The DSL is employed all year round and is available on the phone and to attend meetings during the school holidays.
- We create a culture whereby all staff, volunteers and visitors feel confident and have knowledge of how to raise a concern about poor or unsafe practice in regard to the safeguarding and welfare of the children and young people and such concerns are addressed sensitively and effectively.
- We have systems in place to ensure that any staff who are carrying out both regulated activities and other roles commissioned from external agencies/ organisations have been DBS checked and their employing organisations have safeguarding policies in place, including safer recruitment and annual safeguarding training appropriate to roles and we are compliant with legislation relevant to our setting.
- We ensure a risk assessment takes place to establish that the appropriate checks take place on volunteers.
- We have appropriate procedures to ensure that there is no risk to children from visitors and we exercise diligence and prevent any organisation or speaker from using our facilities to disseminate extremist views or radicalise pupils and staff.
- There are suitable arrangements for visitors coming onto the premises which may include an assessment of the educational value, the age appropriateness of what is going to be delivered and whether relevant checks will be required.

2.3 OUR DESIGNATED SAFEGUARDING LEAD (DSL)

The DSL is a member of our Senior Leadership Team and has a specific responsibility for championing the importance of safeguarding and promoting the welfare of children and young people. They take lead responsibility for safeguarding and child protection, including online safety and understanding the filtering and monitoring systems and processes in place. Some activities may be delegated as appropriate to a DDSL but they take the ultimate lead for child protection. (DDSL/s are trained to the same standard as the DSL).

The DSL, will:

- Act as the first point of contact with regards to all safeguarding matters.
- Encourage a culture of listening to children and taking account of their wishes and feeling, and also understand the difficulties some children may have in approaching staff about their circumstances
- Work closely with the school's lead for mental health
- Help promote educational outcomes by working closely with their teachers and sharing information about their welfare, safeguarding and child protection concerns.
- Attend specialist DSL training every two years.
- Keep up to date with changes in local policy and procedures and be aware of any guidance issued by the DfE, MSP and LA concerning Safeguarding, e.g., through DSL Networks, Safeguarding Newsletters and Circular Letters
- Provide support and training for staff and volunteers
- Liaise with the three safeguarding partners and work with other agencies in line with 'Working Together to Safeguard Children'

- Ensure that all referrals made to Children's Services are effective and in line with MSP procedures, and follow escalation process if necessary.
- Understand the assessment process for providing early help
- Have a working knowledge of how local authorities conduct a child protection case conference and review conference, and be able to attend and contribute to these effectively **including applying the Signs of Safety approach within reports**
- Ensure that all staff with specific responsibility for safeguarding children, including the named DSL, receive the appropriate funding, training, resources and support needed to undertake this role. Access to professional supervision is recommended practice.
- Know when to call the police if a crime may have been committed following the National Police Chiefs' Guidance (**Annex C.p 165**)
- Be aware of the requirement for children investigated by the police to be supported by an appropriate adult (PACE Code C 2019). (**Annex C, p165**)
- Refer cases to the Disclosure and Barring Service where a person is dismissed or has left due to risk/harm to a child.
- Ensure that all staff and volunteers understand and are aware of our reporting and recording procedures and are clear about what to do if they have a concern about a child.
- Create and maintain child protection files and keep them up to date.
- Keep information confidential and store securely on the schools electronic CPOMS system
- Help promote educational outcomes for vulnerable children, including those with, or who have had, a social worker, in conjunction with other appropriate colleagues (**KCSiE, 191-196**)
- **Share and transfer safeguarding and child protection information as appropriate. The DSL will make arrangements with the transferring or receiving school for a safeguarding handover meeting. This will be completed within 5 days of the pupil starting or leaving Bridgelea Primary School.**
- Always be available during school hours during term time, and at other times as designated by the Headteacher.
- **Understand and support the school with regards to the requirements of the Prevent Duty and be able to provide advice and support to staff on protecting children from risk of radicalisation**
- Promote supportive engagement with parents/carers in safeguarding and promoting the welfare of children, including where families may be facing challenging circumstances
- Understand the lasting impact that adversity and trauma can have on children and young people
- Ensure the child protection policy is available publicly and parents/carers are made aware of the fact that referrals about suspected abuse or neglect may be made and the role of the school in this.
- **Activate the escalation process where plans, partners or processes are not improving the situation or outcome for a child**

SCHOOL STAFF

2.4 ALL STAFF

All staff in the school, including supply staff and volunteers have responsibility for safeguarding, according to their roles and under the guidance of the DSL.

All staff will:-

- Follow our agreed Code of Conduct and 'Safer Working Practices' guidance
- Read Part One/Annex A/Annex B of KCSiE 2023 as directed by senior leaders and appropriate to individual roles.
- Attend training sessions/briefings as required to ensure that they are aware of the signs of Abuse, Neglect, Complex Safeguarding concerns and key LA approaches including Early Help, Signs of Safety, Safe & Together and ensuring that the voices of children are listened to and taken account of.
- Attend training sessions/briefings as required to ensure that they follow relevant policies e.g. Relationships Policy, E-Safety Policy, Appropriate Touch Policy
- Provide a safe environment where children can learn
- Be aware of specific vulnerabilities of some children, including those with poor attendance and those with a Social Worker.
- Understand the concept of 'it could happen here' in respect of child sexual violence or sexual harassment and be proactive in response to a whole school approach to the issue
- Be approachable to children and respond appropriately to any disclosures
- Be aware that there are a range of reasons why some children may not feel ready or know how to tell someone that they are being abused, exploited or neglected, be professionally curious and actively build trusted relationships which facilitate communication.
- Never promise a child that they will not tell anyone about an allegation, as this may not ultimately be in the best interest of the child
- Know what to do if they have a concern and follow our agreed procedures for recording concerns, sharing information and making referrals
- Attend multi-agency meetings as required, if appropriate to their role
- Be aware of the local early help processes and understand their role in it
- Contribute to the teaching of safeguarding in the curriculum as required, if appropriate to their role
- Provide targeted support for individual and groups of children as required, if appropriate to their role

Teaching staff have additional statutory duties, including to report any cases of known or suspected Female Genital Mutilation.

3. TRAINING AND AWARENESS RAISING

- 3.1 In accordance with KCSiE 2023, all new staff and regular volunteers will receive appropriate safeguarding information during induction (including online safety and their responsibilities in relation to filtering and monitoring) and be made aware of the systems within the school which support safeguarding e.g. the Behaviour Policy
This training will be regularly updated
- 3.2 All staff must ensure that they have read and understood KCSiE: Part One/Annex A and/or Annex B. A Safeguarding Briefing for staff on the KCSiE changes for 2023 is held in the Autumn term. Staff are provided with a copy of KCSiE Part 1, 2023, on Parago, the schools e-sign document manager system. Staff are required to sign to say that they have read and understood the content of the policy. Staff will complete a KCSiE quiz in

the Autumn term to clarify understanding and check for areas of training and further development.

- 3.3 All staff will receive regular child protection training at least every 2 years and at least an annual update which includes basic safeguarding information about our policies and procedures, signs and symptoms of abuse (emotional and physical), indicators of vulnerability to exploitation and radicalisation, how to manage a disclosure from a child as well as when and how to record a concern about the welfare of a child, with regular updates in relation to local and national changes.
- 3.4 All staff members will receive regular safeguarding and child protection training and updates, including online safety and their role and responsibility in relation to filtering and monitoring as required, providing them with relevant skills and knowledge to safeguard children effectively.
- 3.5 To recognise the expertise built within staff by training and managing concerns on a daily basis, staff will be provided with the opportunity to contribute to and shape safeguarding arrangements and the child protection policy.
- 3.6 All interview panels will include at least one member that has completed up to date Safer Recruitment training within the last 3 years.
- 3.7 All staff need to understand the impact mental health problems may have on all aspects of safeguarding including the relevance of Adverse Childhood Experiences (ACEs) and the impact of trauma on children and young people and this is included in our training programme.

4. SAFEGUARDING/CHILD PROTECTION POLICY & PROCEDURES

4.1 PUPIL VOICE

Children are encouraged to contribute to the development of policies and share their views.

- 4.1.2 We support the LA in its progress towards UNICEF Child Friendly City status and participate in the UNICEF Rights Respecting School programme and are accredited at Gold Level.

4.2 POOR ATTENDANCE

We adopt MCC Attendance Policy and Attendance Strategy and reflect these in our own policies. We attend targeted support meetings related to attendance when required.

- 4.2.1 We view poor attendance as a safeguarding issue and in accordance with our Attendance Policy, absences are rigorously pursued and recorded. This includes missing individual lessons, as well as being absent or late at Registration. Any concerning patterns are reviewed in partnership with the appropriate agencies, we take action to pursue and address all unauthorised absences in order to safeguard the welfare of children in our care.
- 4.2.2 Our Attendance Policy identifies how individual cases are managed and how we work proactively with parents/carers to ensure that they understand why attendance is important. In certain cases this may form part of an Early Help Assessment (EHA) or a Parenting Contract.

- 4.2.3 We implement the statutory and LA requirements in terms of monitoring and reporting children to the CME Team (named unchanged)
- 4.2.4 We will follow the Anxiety Based School Avoidance guidance (MCC, updated version May 2023) to assist with strategies for supporting children and young people experiencing anxiety to return to school.
- 4.2.5 We will alert the relevant team or authority if a new child who has been expected to attend, does not arrive on the due date. (This is in response to learning from local serious case reviews.)

4.3 ALTERNATIVE PROVISION (AP)

- 4.3.1 We will only place children in AP which is a registered provider and has been quality assured e.g. is on the MCC approved provider list or has been judged by Ofsted to be Good or better.
- 4.3.2. Children who require access to AP will have a personalised learning plan designed to meet their needs. Our DSL will work together with the DSL at the AP to ensure effective sharing of information and that any safeguarding concerns are followed up appropriately.

4.4 EXCLUSIONS

- 4.4.1. We comply with statutory regulations and with the LA Inclusion Policy.
- 4.4.2. The DSL will be involved when a fixed term or permanent exclusion is being discussed and any safeguarding issues will be considered. If there is an open EH, CiN or CP, the EH Practitioner or Social Worker will be informed.
- 4.4.3 We will work with the MCC Weapon Carrying in Schools and Colleges guidance to assist in decision making around exclusion and other responses to carrying or using weapons in school.
- 4.4.4 Where it is felt that a child or young person is likely to be permanently excluded a multi-agency assessment will be instigated to ensure that there is improved understanding of the needs of the young person and their family and that the key agencies are involved.

4.5 VULNERABLE GROUPS

- 4.5.1 We ensure that all key staff work together to safeguard vulnerable children. This includes those children causing concern but not yet reaching statutory intervention level as well as those children who are in receipt of statutory support.
- 4.5.2 Any child may benefit from early help at times, but all staff will be particularly alert to the potential need for early help for a child who:
- Is disabled or has certain health conditions and has specific needs

- Has special educational needs (whether or not they have a statutory Education, Health and Care Plan)
 - Has a mental health need
 - Is a young carer
 - Is showing signs of being drawn in to anti-social or criminal behaviour, including gang involvement and association with organised crime groups or county lines
 - Is frequently missing/goes missing from care or from home
 - Is at risk of modern slavery, trafficking, sexual or criminal exploitation
 - Is at risk of being radicalised or exploited
 - Has a family member in prison, or is affected by parental offending
 - Is in a family circumstance presenting challenges for the child, such as drug and alcohol misuse, adult mental health issues and domestic abuse
 - Is misusing drugs or alcohol themselves
 - Has returned home to their family from care
 - Is at risk of 'honour'- based abuse such as Female Genital Mutilation or Forced Marriage
 - Is a privately fostered child
 - Is persistently absent from education, including persistent absences for part of the school day
- Additionally, these children will also be considered
- International new arrival, refugee or asylum seeker
 - Looked after, previously looked after or under a special guardianship order.
 - Has or has had a social worker
 - LGBT children (KCSiE, Part 2:203-205)
 - Has the potential for adultification

4.5.3. Children with special educational needs and disabilities (SEND) can face additional safeguarding challenges. All staff are aware that additional barriers can exist when recognising abuse and neglect in this group of children. These can include:-

- Assumptions that indicators of possible abuse such as behaviour, mood and injury relate to the child's disability without further exploration
- Being more prone to peer group isolation or bullying (including prejudice-based bullying) than other children
- The potential for children with SEND or certain medical conditions being disproportionately impacted by behaviours such as bullying, without outwardly showing any signs and
- Communication barriers and difficulties in managing or reporting these challenges. (KCSiE, Part 2:199)

4.5.4 Mental health problems can, in some cases, be an indicator that a child has suffered, or is at risk of suffering abuse, neglect or exploitation. We have clear systems and processes in place for identifying possible mental health problems, including routes to escalate and clear referral and accountability systems. (KCSiE, Part 2:180-186)

4.5.5. We ensure that staff consider the context in which incidents occur and whether wider environmental factors (extra-familial harm) are present in a child's life that are a threat to their safety and/or welfare.

4.5.6. We ensure that appropriate staff have the information they need in relation to a child's looked after legal status and regarding a child who was previously looked after. We work with relevant social workers and the Virtual School (KCSiE, 187-196)

4.5.7 Where children have or have had a social worker, we will work alongside the social worker to ensure there is a clear education focus in the Plan for the child.

4.6 CHILD ON CHILD ABUSE (KCSiE, Part 5 & Part2,156)

4.6.1 All our staff recognise that children are capable of abusing their peers, including online.

4.6.2 Appendix B clearly outlines our procedures and approach to this issue which are summarised below:-

- The procedures to minimise the risk of child-on-child abuse
- The systems in place to ensure that children understand that the law is there to protect them not to criminalise them and for children to confidently report abuse, knowing their concerns will be taken seriously
- How allegations of child-on-child abuse will be recorded, investigated and dealt with
- Recognition of the importance of understanding inter-familial harms and our processes as to how victims, perpetrators and any other children affected by child-on-child abuse will be supported
- Recognition that even if there are no reported cases of child-on-child abuse, such abuse may still be taking place and simply not be reported
- Our clear zero-tolerance approach to abuse, never passing it off as 'banter', 'just having a laugh', 'part of growing up' or 'boys being boys'.
- Recognition that it is more likely girls will be victims and boys' perpetrators, but that all child-on-child abuse is unacceptable and will be taken seriously
- Recognition of the different forms child on child abuse can take
- Our response to reports of sexual violence and sexual harassment as guided by Part Five of KCSiE 2022

4.7 ELECTIVE HOME EDUCATION

4.7.1 We understand the variety of reasons why some parents/carers would wish to home educate their child/ren and support this where the child's best education is at the heart of the decision.

4.7.2 We also understand that by being educated at home, some children are less visible to the services that are there to keep them safe and supported in line with their needs

4.7.3 If a parent/carer informs us of their **intention** to remove their child/ren from school, we will aim to co-ordinate a meeting between ourselves, parents/carers (and other key professionals if relevant) to ensure that the best interests of the child have been considered, especially if the child has SEND, is vulnerable or has a social worker, **before** the final **decision** is made.

4.7.4 We will inform Manchester LA of all deletions from the admission register when a child is taken off-role and we understand that a child may be removed from roll as soon as the parent has informed us of their decision.

4.7.5 We are familiar with the guidance from DfE outlining the roles and responsibilities of the LA in relation to Elective Home Education

4.8 COMMUNITY SAFETY

4.8.1 Serious violence

We are aware of the indicators and risk factors which may signal that children are at risk from, or are involved with, serious violent crime.

4.8.2 We update our awareness training for staff based on new information regarding trends, modes of operation and language/slang when provided by partner agencies.

4.8.3 Child abduction and community safety incidents

We will support children by building on their confidence and ability to deal with challenging situations to enable them to keep themselves safe.

4.8.4 Our response to children carrying knives or other weapons in school and in situations out of school is aligned to the Manchester Knife and Weapon Carrying in Schools and Colleges Guidance (Knife Crime Protocol) in which we take a holistic and measured approach on a case-by-case basis to such incidents in and out of school.

5 . CASE MANAGEMENT, RECORD KEEPING & MULTI-AGENCY WORKING

5.1 KEEPING RECORDS

Bridgelea Primary School uses CPOMS electronic records systems for all individual Child Protection pupil files.

The DSL, Deputy DSL, SLT and Admin Staff have full access to the system and elevated access is delegated to other staff members as deemed appropriate, i.e., Class Teachers and Teaching Assistants.

CPOMS is monitored by the DSL and Deputy DSL for all incidents logged and any action to be taken is clearly recorded within the system.

5.1.1 We keep and maintain up to date information on children on the school roll including where and with whom the child is living, attainment, attendance, referrals to and support from other agencies. The record will also include a chronology of any other significant event in a child's life and up to date contact details for adults who have day to day care of the child.

5.1.2 We keep copies of all referrals to Children and Families Services, the Early Help Hub and any other agencies related to safeguarding children.

5.1.3 We keep our safeguarding records secure.

5.1.4 We send a pupil's child protection or safeguarding file separately from the main file to a new establishment if they leave as soon as possible. We keep a copy of the file in accordance with statutory and LA Guidance.

5.2 RECORDING AND REPORTING CONCERNS

5.2.1 All staff, volunteers and visitors have a responsibility to report any concerns about the welfare and safety of a child and all such concerns must be taken seriously (Appendix A). If a concern arises all staff, volunteers and visitors must:

- Speak to the DSL or the person who acts in their absence
- Agree with this person what action should be taken, by whom and when it will be reviewed
- Record the concern using our safeguarding recording system

5.3 WORKING WITH PARENTS/CARERS

5.3.1 Our responsibility is to safeguard and promote the welfare of all the children in our care. We aim to do this in partnership with our parents/carers and would expect them to provide up-to-date contact details, including at least 2 emergency contacts.

5.3.2 In most cases parents/carers will be informed when concerns are raised about the safety and welfare of their child and given the opportunity to address any concerns raised.

5.3.3 We aim to engage with parents/carers through the LA Early Help processes, including holding strength-based conversations.

5.3.4 We will inform, and gain consent from parents/carers if possible, if a referral is to be made to Children's Social Care or any other agency **unless it is believed that by doing so would put the child at risk** e.g. in cases of suspected sexual abuse. We will record the reasons if consent is not gained.

5.3.5 In such cases the DSL or Headteacher will seek advice from Children's Social Care AGS.

5.4 MULTI-AGENCY WORKING

5.4.1 We will develop effective links with other relevant agencies and co-operate as required with any enquiries regarding child protection issues.

5.4.2 We will develop effective links with the Early Help Hubs and carry out an Early Help Assessments (EHA), as appropriate.

5.4.3 We will notify the named Social Worker if:

- A child subject to a child protection plan is at risk of permanent exclusion
- There is an unexplained absence of a child who is subject to a child protection plan
- It has been agreed as part of any child protection plan or core group plan.
- We receive an Operation Encompass notification and believe the social worker may not be aware of the circumstances

5.4.4. We will regularly review concerns if necessary, as detailed in KCSiE and will follow LA and MSP procedures if there is a need to re-refer or

to escalate.

5.5 CONFIDENTIALITY & INFORMATION SHARING

- 5.5.1 Staff will ensure that confidentiality protocols are followed and under no circumstances will they disclose any information about children outside of their professional role.
- 5.5.2 Information about children will only be shared with other members of staff on a need-to-know basis
- 5.5.3 All staff and volunteers understand that they have a professional responsibility to share information with other agencies, in the best interests of the child's safety, welfare and educational outcomes. This is a matter of routine.
- 5.5.4 We have arrangements in place that set out clearly the process and principles for sharing information within school and with the three safeguarding partners, other organisations, agencies and practitioners as required. This includes an agreed rationale for gaining consent, when and what to share, when and what not to share and systems for recording these decisions.
- 5.5.5 We understand that the Data Protection Act 2018 and UK GDPR do not prevent the sharing of information for the purposes of keeping children safe. Fears about sharing information must not be allowed to stand in the way of the need to safeguard and promote the welfare and protect the safety of children. (KCSiE Part 2:115-123)

5.6 CHILD PROTECTION (CP), CHILD IN NEED (CiN) & TEAM AROUND THE CHILD/FAMILY MEETINGS AND CONFERENCES

- 5.6.1 A child protection conference will be held by Social Care if it is considered that the child is suffering or at risk of significant harm.
- 5.6.2 We will attend and contribute to initial and review CP conferences, CiN conferences and relevant multi-agency meetings, including core groups.
- 5.6.3 Members of staff who are asked to attend a child protection conference or other core group meetings (either in person or virtually) about an individual pupil/family will need to have as much relevant updated information about the child as possible and will send a report, using the most up to date proforma to the Chair within the required timescales, at least 48 hours before the meeting.
- 5.6.4 Our reports will always include the voice of the child, which is especially important where there may be barriers to communication.
- 5.6.2 We will aim to discuss and share reports with the parents/carers before the conference.
- 5.6.3 All relevant staff will be confident in using the tools which are part of the Signs of Safety approach, including refreshed and updated versions

5.7 CONCERNS/DISCLOSURES BY CHILDREN, STAFF & VOLUNTEERS

- 5.7.1 Any concern, disclosure or expression of disquiet made by a child will be listened to seriously and acted upon as quickly as possible to safeguard his or her welfare.
- 5.7.2 All staff and volunteers must be clear with children that they cannot promise to keep secrets.
- 5.7.3 We will make sure that the child or adult who has expressed the concern or made the complaint will be informed not only about the action to be taken but also where possible about the length of time required to resolve the complaint.
- 5.7.4 We will endeavour to keep the child or adult informed about the progress of the complaint/expression of concern.

5.8 LEARNING FROM SERIOUS CASES

5.8.1 MSP will always undertake a child practice review (CPR) previously called a serious case review (SCR) when a child dies (including death by suicide) and abuse or neglect is known or suspected to be a factor in their death. The purpose of the CPR/SCR is to:

- Find out if there are any lessons to be learnt from the case about how local professionals and agencies work together to safeguard and promote the welfare of children and young people
- Identify what those lessons are, how they will be acted on and what is expected to change as a result of the serious case review.
- Improve inter-agency working to better safeguard and promote the welfare of children and young people

5.8.2. If required, we will provide an individual management report for a CPR/SCR and will cooperate fully with implementing outcomes of the review including reviewing policy, practice and procedures as required.

5.8.3 Our DSL will keep up to date with the findings from CPR/SCR and other learning reviews nationally and in Manchester, share the learning and review our safeguarding procedures if relevant.

6. THE CURRICULUM

We are committed to promoting emotional health and wellbeing and to supporting the development of the skills needed to help keep children safe and healthy. This includes face to face teaching, blended learning and online learning as needed in response to any crisis situation that may arise.

- 6.1 All children have access to an appropriate curriculum, differentiated to meet their needs. They are encouraged to express and discuss their ideas, thoughts and feelings through a variety of activities and have access to a range of cultural opportunities which promote the fundamental British values of tolerance, respect and empathy for others.

- 6.2. This enables them to develop the necessary skills to build self-esteem, respect others, support those in need, resolve conflict without resorting to violence, question and challenge and make informed choices in later life.
- 6.3.1 Relationships Education, Relationships and Sex Education (RSE) and Personal Social and Health Education (PSHE) lessons will provide opportunities for children and young people to discuss and debate a range of subjects including lifestyles, family patterns, religious beliefs and practices and human rights issues.
- 6.3 We take account of the latest advice and guidance provided to help address specific vulnerabilities and forms of grooming and exploitation e.g. Domestic Abuse, Child Sexual Exploitation, Peer on Peer/Child on Child Abuse, Radicalisation, 'Honour-based' Abuse, including Forced Marriage, Female Genital Mutilation & breast ironing, Modern Slavery and County Lines.
- 6.4 All children know that there are adults in our school whom they can approach in confidence if they are in difficulty or feeling worried and that their concerns will be taken seriously and treated with respect.
- 6.5 Children are encouraged to contribute to the development of policies.
- 6.6 Children are taught about safeguarding including online safety and for some children, this will take a more personalised or contextualised approach, such as more vulnerable children, victims of abuse and some SEND children. (KCSiE Part 2,129)
- 6.7 We have a clear set of values and standards, upheld and demonstrated throughout all aspects of school life.
- 6.8 We have a culture of zero tolerance for sexism, misogyny/misandry, homophobia, biphobic and sexual violence or harassment

7 . ONLINE-SAFETY (KCSiE, Part 2, 135-148)

- 7.1 Online safety is a safeguarding issue and we understand that children must be safeguarded from potentially harmful and inappropriate online material. Our whole school approach empowers us to protect and educate pupils and staff in their use of technology and establishes mechanisms to identify, intervene in and escalate any concerns where appropriate. The purpose of Internet use in our school is to help raise educational standards, promote pupil achievement, and support the professional work of staff as well as enhance our management information and business administration.
- 7.2 The checklist to ensure compliance with Filtering and Monitoring standards is included as Appendix B

- 7.3 We consider the 4C areas of risk to inform our online safety policy and ensure this is a running and interrelated theme when developing other relevant policies and procedures.
- 7.4 The Internet is an essential element in 21st century life for education, business and social interaction and we have a duty to provide children with quality access to it as part of their learning experience.
- 7.5 We will ensure that appropriate filtering methods (without 'over-blocking') are in place to ensure that pupils are safe from all types of inappropriate and unacceptable materials, including terrorist and extremist material.
- 7.6 We ensure our monitoring system responds quickly to incidents and they are escalated to those with a safeguarding responsibility
- 7.7 We use an appropriate level of security protection in order to safeguard our systems, staff and learners from evolving cyber-crime technologies and periodically review its effectiveness.
- 7.8 We will encourage children to use Social Media safely, including opportunities for them to think and discuss the issues and to check their sources of information. We will keep abreast of new developments that may potentially harm our children.
- 7.9 We have separate acceptable use policies (AUPs) for both staff and children. This covers the use of all technologies and platforms used, both on and offsite.
- 7.10 We will complete online safety audits as appropriate to our needs and know where to access recommended models. The school uses 360 Audit Tools for online safety and this is maintained, reviewed and monitored by the DSL and Subject Lead for ICT.
- 7.11 We work with parents to promote good practice in keeping children safe online, including to support their children learning at home.
- 7.12 We ensure that all staff adhere to safe and responsible online behaviours when providing home learning and communicating with families.
- 7.13 As technology, and the risks and harms associated with it, evolve and change rapidly, we will carry out an annual review of our approach to online safety supported by an annual risk assessment that considers and reflects the risks our children face. (KCSiE Part 2, 135-148)

8. SAFER RECRUITMENT & SELECTION OF STAFF

- 8.1 Our recruitment and selection policies and processes adhere to the DfE guidance, KCSiE and the LA model policy for Safer Recruitment (Appendices A & D)
- 8.2 Our safeguarding culture and vigilance, in conjunction with our policies and processes, will deter and prevent people unsuitable to work with children from applying or securing

employment or volunteering opportunities at our school. These measures are outlined below and expanded in our Safer Recruitment Policy.

- All those involved with the recruitment and employment of staff to work with children have received appropriate safer recruitment training and at least one of the persons who conducts an interview has completed safer recruitment training.
- Our job adverts will include safeguarding requirements and the schools commitment to safeguarding and promoting the welfare of children
- Our job adverts will make clear that safeguarding checks will be undertaken, including online checks for shortlisted candidates
- We understand the process around filtering offences
- Our application form will include the statement that it is an offence to apply for the role if an applicant is barred from engaging in regulated activity.
- We do not accept CVs in place of an application form.
- Shortlisted applicants will be asked to complete a self-declaration of their criminal record or information that would make them unsuitable to work with children
- Applicants must sign a declaration confirming information given is true
- References are obtained by the school before interview and open references are not acceptable
- Our selection techniques are pre-arranged and questions structured to understand suitability, skills and motivation for the role
- We will investigate at interview if any concerns have come to light about the candidate through the self-declaration or online checks.
- We involve pupils in the process in a meaningful way
- All information in the decision-making process is recorded along with the decisions made
- Correct pre-employment checks are carried out and appropriately stored on the single central record
- We understand and complete appropriate processes to determine if there are any prohibitions, directions, sanctions disqualifications or restrictions related to the candidate
- We understand the check which needs to be made for individuals who have lived or worked outside the UK
- We adhere to duties which must be performed in relation to agency and third party staff, contractors, trainees or student teachers, visitors and volunteers

- We remain vigilant about safeguarding beyond the recruitment process and ensure commitment is evident to the safety and welfare of our children as enshrined in our ethos
- 8.3 The Headteacher and Governing body will ensure that all external staff and volunteers, including out of hours organisations using our school site have been recruited safely, including DBS checks as appropriate.
- When our school is used for non-school activities, we ensure that arrangements are made to keep the children safe through our letting contracts. We specify that we expect providers to meet the guidance in [Keeping Children Safe in Out of School Settings](#) (KCSiE, Part 2, 167).
 - If we receive an allegation related to an incident that happened when an individual or organisation was using our premises for the purposes of running activities for children, we will follow our own safeguarding policies and procedures, including informing the LADO if relevant (KCSiE Part 4, 377)
- 8.4 The school maintains a single central record of all recruitment checks, updated and monitored at least termly, **by senior leadership and governor.**
- 8.5 Trainee teachers will be checked either by the school or by the training provider, from whom written confirmation will be obtained.
- 8.6 Written notification will be requested from any agency or third party organisation used by us to confirm that the organisation has carried out the statutory recruitment checks.
- 8.7 We will not routinely keep copies of DBS certificates, either electronically or in paper files but if we have good reason to do so, these will not be kept for longer than six months
- 8.7 Risk assessments are carried out on all volunteer activities as required.

9. MANAGING ALLEGATIONS AND CONCERNS AGAINST STAFF, SUPPLY STAFF, VOLUNTEERS AND CONTRACTORS

- 9.1 We follow the DfE guidance KCSiE, Section 4, when dealing with allegations made against staff, supply staff, volunteers and contractors applying the appropriate level of concern criteria and managing accordingly
- 9.2 We follow the DfE guidance KCSiE, Section 4, when dealing with allegations made against staff, supply staff, volunteers and contractors applying the appropriate level of concern criteria and managing accordingly
- 9.3 We work closely with the police, children's social care and MCC LADO when a risk of harm is indicated
- 9.4 The welfare of the child/ren is paramount when considering an allegation and before contacting the LADO we make careful enquiries to help determine facts and foundation to the allegation, aware of not jeopardising any future police investigation

9.5 We consider allegations that may meet the harms threshold and those allegations/concerns that do not, referred to as 'low level concerns'. **These are outlined in our Low Level Concerns Policy**

9.6 The harms threshold indicates that a person would pose a risk of harm if they have-

- Behaved in a way that has harmed a child or may have harmed a child
- Possibly committed a criminal offence against or related to a child
- Behaved towards a child or children in a way that indicates he or she may pose a risk of harm to children
- Behaved or may have behaved in a way that indicates they may not be suitable to work with children (including behaviour that may have happened outside school, known as transferable risk)

9.7 Our Managing Allegations Policy details the processes and responses to reporting harm threshold cases and also managing their conclusions.

9.8 Concerns that do not meet the harm threshold may include

- Suspicions or nagging doubts about a member of staff
- Complaints
- Disclosures made by child, parent/carer or another adult within or outside of school
- Inappropriate conduct outside of work
- Those raised during recruitment and vetting processes

9.9 Our open and transparent culture enables us to identify concerning, problematic or inappropriate behaviour early thus minimising the risk of abuse

9.10 Although low level concerns may not meet the harm threshold, they are not insignificant.

9.11 All low level concerns are reported to the headteacher/principal and may also be self-referred (KCSiE provides further clarity on processes- **423-440**)

9.12 Our **Low Level Concerns** Policy details the processes and conclusion of low level concerns and guidance about including information in references.

9.13 All allegations made against a member of staff, including supply staff, volunteers, contractors or security staff working on site, will be dealt with quickly and fairly and in a way that provides effective protection for the child while at the same time providing support for the person against whom the allegation is made.

9.14 We ensure that all staff are aware of how to raise a concern, including anonymously as a whistle-blower. **These arrangements are detailed within our Whistleblowing Policy.**

9.15 Historic allegations will be referred to the police.

10.SAFETY ON & OFF SITE

- 10.1 Our site is secure with safeguards in place to prevent any unauthorised access and also to prevent children leaving the site unsupervised.
- 10.2 We have good up to date knowledge of our local area and any safeguarding risks to the wider community.
- 10.3 All visitors, including visiting speakers, are subject to our safeguarding protocols while on site. **We will** undertake an assessment of the education value, age appropriateness and content of the visitors itinerary.
- 10.4 Visitors who are in school in a professional capacity will have their ID checked and assurance sought that they have an appropriate DBS check
- 10.5 We will ensure that any contractor, or any employee of a contractor, who is to work in our school, has been subject to the appropriate level of DBS check. We are responsible for determining the appropriate level of supervision depending on the circumstances and set out our safeguarding requirements in any contacts between school and the contractor's organisation. We will always check the identities of contractors and their staff on arrival.
- 10.6 We operate a responsible booking protocol and will carry out appropriate checks on all organisations which request to hire our facilities.
- 10.7 When the school is let, if services or activities re provided by the governing body, under the direct supervision or management of school staff, the school arrangements for child protection will apply.
- 10.8 When the school is let and services or activities are provided by another body, we seek assurance that the body concerned has appropriate safeguarding and child protection policies and procedures in place (including inspecting these as needed) and ensure there are arrangements in place to liaise with school on these matters where appropriate.
- 10.9 **Should we receive an allegation relating to an incident that happened when an individual or organisation were using our premises for the purpose of running activities for children, we will follow our safeguarding policies and procedures including informing the LADO.**
- 10.10 Safeguarding arrangements should be included in any lease or hire agreement as a condition of use and occupation of the school premises – failure to comply with this will lead to termination of the agreement.
- 10.11 We exercise due diligence to prevent any organisation or speaker from using our facilities to disseminate extremist views or radicalise pupils or staff. **Describe procedures**
- 10.12 We have a work experience placement policy and procedures in place. We will ensure that any person supervising a child on a placement has been subject to the appropriate level of DBS check.

- 10.13 All school visits are fully risk-assessed and no child will be taken off-site without parental permission.
- 10.14 For international exchanges, we will liaise with our partner schools abroad to establish a shared understanding of the arrangements in place both before and during the visit. We will ensure we are satisfied that these are appropriate and sufficient to safeguard effectively every child who will take part in the exchange. We may also feel it necessary to contact the relevant foreign embassy or High Commission of the country in question to discuss what checks may be possible in respect of those providing homestay outside the UK.
- 10.15 We have a Health & Safety policy for contacting parents and for reporting to the emergency services, including police and hospitals.
- 10.16 We have read and considered the MCC Critical Incident guidance, the DfE Emergency planning and response for education, childcare and children's social care settings and School and College Security GOV.UK and we have a Critical Incident policy in place.

11 . COMPLEX SAFEGUARDING

Serious violence

- 11.1. We are aware of the indicators and risk factors which may signal that children are at risk from, or are involved with serious violent crime
- 11.2. We will support referrals to Engage panels by providing information about concerns and worries for children involved in ASB and on the edge of criminality, including whether interventions have already been put in place and their success or not.

Child Criminal Exploitation and Child Sexual Exploitation

- 11.2.1 Children's Social Care will refer cases of child exploitation, criminal or sexual, to the Complex Safeguarding Hub and we will contact the professionals' advice line for further support to hasten this process or seek guidance, as appropriate.
- 11.2.2 We understand that schools are one of many locations where children can be targeted and recruited into county lines and recognise additional specific indicators that may be present when a child is criminally exploited through involvement in county lines. (KCSiE, Annex B)
- 11.2.3 We are aware of the significantly low numbers of reported CCE/CSE cases for girls locally and remain vigilant in recognising the signs of involvement for both boys and girls
- 11.2.4 We are mindful of the language and descriptors used when discussing or referring CCE and CSE instances and avoid all victim blaming language.

11.2.5 We consider the use of the term 'gang' and only apply it to Organised Crime Gangs, not urban or street groups, although our children may perceive that they belong to, or associate with, a named 'gang'.

11.2.6 We will seek help, support or recommendations from statutory partners with finding suitable outside presenters to deliver awareness and resilience programmes to help our children make good choices in the near and long term

11.2.7 We are familiar with My Safety Planning approach for Child protection in extra-familial harm circumstances

Appendix A – School Policies

Behaviour, Relationships and Communication Policy
 Whistleblowing Policy
 Low Level Concerns Policy
 Knife and Weapons in Schools Policy
 Anti-bullying Policy
 Online Safety Policy

Appendix B – Child on Child Abuse

What is Child on Child Abuse Abuse?

All children are capable of abusing their peers. This can manifest itself in a whole spectrum of behaviours including:

- Bullying including cyberbullying
- Sexual violence and harassment
- Physical abuse
- Sexting
- Upskirting (now a criminal offence and has reporting requirements)
- Initiation /hazing type violence and rituals

All schools need to include child on child abuse in their schools' policies and procedures and all staff need to be aware of these and ensure they are part of their everyday practice.

Children also need to know how to report concerns and know that they will be listened to and supported. These should include:

- Procedures to minimise the risk of child on child abuse
- How allegations are recorded, investigated and dealt with
- Clear processes as to how victims, perpetrators and any other children affected will be supported
- Recognition of the gendered nature of child on child abuse but recognising, that all forms of this behaviour are unacceptable and will be taken seriously

Additional areas for consideration can be found in Sexual Violence and Sexual Harassment between Children in Schools and Colleges guidance (2018)

While schools cover many aspects of child on child abuse in other policies such as the whole school behaviour policy, the anti-bullying policy and the online safety policy (cyberbullying and sexting) schools need to be clear about their strategies around wider behaviours including sexist and sexual bullying, sexual harassment, sexual violence.

Some useful definitions:

Sexual Harassment

This can be defined as 'unwanted conduct of a sexual nature' that can occur online and offline. In the context of this guidance this means in the context of child on child sexual harassment.

Sexual harassment is likely to: violate a child's dignity, and/or make them feel intimidated, degraded or humiliated and/or create a hostile, offensive or sexualised environment.

It can include:

- Sexual comments, such as: telling sexual stories, making lewd comments, making sexual remarks about clothes and appearance and calling someone sexualised names;
- Sexual "jokes" or taunting;

Sexting

Sexting is when someone shares sexual, naked or semi-naked images or videos of themselves or others or sends sexually explicit messages. They can be sent using mobiles, tablets, smartphones, laptops - any device that allows you to share media and messages. This is also known as youth produced sexual imagery

The UK Council for Internet Safety (UKCIS) Education Group has published Advice for Schools and Colleges on Responding to Sexting Incidents (www.gov.uk/government/publications/sexting-in-schools-and-college)

Upskirting

This typically involves taking a picture under a person's clothing without them knowing, with the intention of viewing their genitals or buttocks to obtain sexual gratification, or cause the victim humiliation, distress or alarm.

It is now a criminal offence and may constitute sexual harassment. Cases of 'up skirting' have a mandatory requirement for being reported.

Sexual Violence

In this guidance this refers to sexual violence in the context of child on child sexual violence.

Children can and do abuse other children. Sexual violence covers a spectrum of behaviour. It can refer to sexual offences under the Sexual Offences Act 2013.

This includes:

Rape:

A person (A) commits an offence of rape if: he intentionally penetrates the vagina, anus or mouth of another person (B) with his penis, B does not consent to the penetration and A does not reasonably believe that B consents.

Assault by Penetration:

A person (A) commits an offence if: s/he intentionally penetrates the vagina or anus of another person (B) with a part of her/his body or anything else, the penetration is sexual, B does not consent to the penetration and A does not reasonably believe that B consents.

Sexual Assault:

A person (A) commits an offence of sexual assault if: s/he intentionally touches another person (B), the touching is sexual, B does not consent to the touching and A does not reasonably believe that B consents.

Consent

Consent is about having the freedom and capacity to choose. Consent to sexual activity may be given to one sort of sexual activity but not another, e.g. to vaginal but not anal sex or penetration with conditions, such as wearing a condom. Consent can be withdrawn at any time during sexual activity and each time activity occurs. Someone consents to vaginal, anal or oral penetration only if s/he agrees by choice to that penetration and has the freedom and capacity to make that choice.

It is important to know that:

- A child under the age of 13 can never consent to any sexual activity;
- The age of consent is 16;
- Sexual intercourse without consent is rape.

It is also important to differentiate between consensual sexual activity between children of a similar age and that which involves any power imbalance, coercion or exploitation.

Due to their additional training, the designated safeguarding lead (or deputy) should be involved and leading the school or college response. If in any doubt, they should seek expert advice.

It is important that schools and colleges consider sexual harassment in broad terms. Sexual harassment (as set out above) creates an atmosphere that, if not challenged, can normalise inappropriate behaviours and provide an environment that may lead to sexual violence.

Harmful Sexual Behaviour (HSB)

Children's sexual behaviour exists on a wide continuum, from normal and developmentally expected to inappropriate, problematic, abusive and violent. Problematic, abusive and violent sexual behaviour is developmentally inappropriate and may cause developmental damage. A useful umbrella term is "harmful sexual behaviour". The term has been widely adopted in child protection and is used in this advice.

Harmful sexual behaviour can occur online and/or offline and can also occur simultaneously between the two. Harmful sexual behaviour should be considered in a child protection context. Useful guidance can be found in: - NSPCC and Research in Practice's Harmful Sexual Behaviour Framework:

(www.nspcc.org.uk/globalassets/documents/publications/harmful-sexual-behaviourframework.pdf)